

IRI RESOURCE

SPRING EDITION 2025

WWW.IRI-DELAWARE.ORG

Our Mission:

To unlock the potential of Delawareans with disabilities by empowering them to realize, achieve and maintain independent living

TOPICS

- **Letter from the Executive Director**
- **Office Closings:** The days our offices are closed for the holidays
- **Health Corner: Measles Outbreak**
- **Protecting Our Community:** The Urgent Need for Your Voice
- **Independent Resources, Inc. Quarterly Mixer!**
- **Community Central:** Happy Spring! check out these awesome articles.
- **Upcoming Events:** See what's on the horizon in the community!

Announcements!

Information about
SSA Overpayment Rate

[Click Here to Learn More](https://tinyurl.com/dexn6u5v)

If the link doesn't work please cut and paste the link below into your browser.

<https://tinyurl.com/dexn6u5v>

ABOUT IRI

Independent Resources Inc, is a Nonprofit Organization that helps people with disabilities. We are located in New Castle County, Kent and Sussex County.

We continue to grow in our services and programs to increase independence of persons with disabilities.

OUR CORE SERVICES

- Advocacy
- Information and Referral
- Independent Living Skills
- Peer Counseling & Peer Support
- Transition Assistance

OTHER SERVICES WE PROVIDE

- Health Navigation
- Student Pre-Employment training (Pre-Ets)
- Small Business Development training
- Home Modification
- Housing Assistance

For more information please check our Website www.iri-delaware.org or call 302-765-0191

Letter from the Executive Director's Desk:

Lillian Harrison, Executive Director- Independent Resources Inc.

Dear Community Partners and Friends,

As we continue to navigate the shifting tides of today's Economy, we recognize that the current landscape is challenge for many. While the undercurrent a subtle yet powerful force seems to be pulling us toward uncertainty, I want to assure you that Independent Resources, Inc. (IRI) remains stead fast in our mission.

Together with out dedicated community partners, we are committed to maintaining the same high level of service and support that out consumers have come to rely on. These are the moments that call us not to retreat, but to rise together.

To our partners: now is the time to lean in. Let's share resources, uplift one another and reinforce the foundation we've built through collaboration, trust and shared purpose. In times of uncertainty, it is our faith dedication and unity that sustains us. It is through these strengths that we continue to reach and support our most vulnerable neighbors.

We thank you for walking alongside us, and for your continued partnership, encouragement and resilience. Let's move forward in strength together.

With gratitude,

Lillian Harrison

Executive Director

Independent Resources, Inc,

MAKE YOUR IMPACT TODAY

Please help us in our mission to help all people with disabilities live independently.

CLICK TO DONATE

Office Closings

Below are the following dates that our offices will be closed:

Friday, April 18th
Good Friday

Monday, May 26th
Memorial Day

Thursday, June 19th
Juneteenth

Friday, July 4th
Independence Day

MONTHLY AWARENESS

For April, May, June and July

Please Note: If you have any issues with the links below please to cut and paste the links into your browser.

April is National Autism Awareness Month

[Click Here to Learn More](#)

<https://tinyurl.com/8sbuhm4x>

May is Mental Health Awareness Month

[Click Here to Learn More](#)

<https://tinyurl.com/52a9djz6>

June is Alzheimer's & Brain Awareness Month

[Click Here to Learn More](#)

<https://tinyurl.com/4by76myp>

July is UV Safety Awareness Month

[Click Here to Learn More](#)

<https://tinyurl.com/5errd54x>

Protecting Our Community: The Urgent Need for Your Voice

At **Independent Resources, Inc. (IRI)**, we stand as a pillar of support for individuals with disabilities, providing essential services that empower, advocate, and uplift our community. However, our ability to continue this vital work is now at risk.

Two critical issues threaten the future of independent living services and nonprofit organizations in Delaware and across the nation. **We need your voice now more than ever.**

(Please note: If you have any issues with the links below please to cut and paste the links into your browser.)

1. Protecting Disability Rights: The Attack on Section 504

A coalition of **16 states has filed a lawsuit against the federal government**, challenging amendments to the **Rehabilitation Act of 1973 and Section 504**—a landmark policy ensuring the rights of people with disabilities. This act has long served as a foundation for accessibility, employment opportunities, and community integration.

For decades, people with disabilities have fought for equal access—to **enter buildings, secure employment, leave institutions, and fully participate in society**. Rolling back these protections threatens the independence and rights that so many have worked tirelessly to achieve.

We cannot afford to go backward. Take action and learn more about how you can advocate against these harmful changes: [NCIL 504 Advocacy](#).

2. The Federal Funding Freeze: A Threat to Our Existence

The federal grants that sustain Centers for Independent Living—like IRI—are under heightened scrutiny and at risk of being placed on hold. Without these crucial funds, nonprofits serving people with disabilities could be forced to close their doors.

There are no other organizations like Centers for Independent Living—run by people with disabilities, for people with disabilities. We provide services across all disabilities, age groups, and communities, ensuring that individuals have the tools and resources they need to thrive.

If funding is frozen, it means a **hard stop** to:

- ✓ Independent Living Services
- ✓ Assistive Technology Support
- ✓ Employment and Housing Assistance
- ✓ Advocacy for Disability Rights

We urge you to **reach out to lawmakers and demand that funding for nonprofits remains intact**. Here's how you can help:

🗨️ Join Delaware Advocacy Efforts: [Delaware Alliance for Nonprofit Advancement \(DANA\)](https://delawarenonprofit.org/).
(<https://delawarenonprofit.org/>)

🗨️ Hear what Senator Blunt-Rochester has to say about the impact on Delaware nonprofits: [C-SPAN Clip](#)

Your Voice Matters

Nonprofits like IRI are the backbone of our community, providing essential support where it is needed most. **Without funding, we cease to exist. We need your help to fight for the rights of individuals with disabilities and secure the funding necessary to continue serving our community.**

- 🗨️ **Contact your local representatives**
- 🗨️ **Share this message on social media**
- 🗨️ **Advocate for disability rights and nonprofit funding**

Together, we can ensure that the progress we've made is not undone. **Show us your support—use your voice to protect our future.**

🔗 [National Council for Independent Living Advocacy](https://ncil.org/)
(<https://ncil.org/>)

Thank you for standing with us in this critical fight.

Independent Resources, Inc. (IRI)

📞 **Contact Us: 302-536-1387**

✉️ **Email: lharrison@iri-de.org**

🌐 **Website: www.iri-delaware.org**

Health Corner: Measles Outbreak



By Dr. Jackie Reyes

The Centers for Disease Control (CDC) has declared in 2000 that measles had been eradicated in the United States. This has been attributed to a strong measles vaccination program, a highly effective measles vaccine and immediate response of public health and other health professionals to cases of measles and outbreak.

However the United States have recently seen an increase in the number of measles cases. As of March 27, 2025, the CDC confirmed 483 cases of measles (with 2 deaths) compared to 285 cases of measles for 2024.

According to the World Health Organization (WHO), The decline in nationwide Vaccination rate contributed to the increase in cases. Disinformation, international travel and barriers to health care access may be the reason for the decline in the vaccination rate. Some communities have seen a much lower rate of vaccination for kindergarten students causing an opportunity for measles to spread.

In addition, the disease can be contracted while traveling and brought to the United States by unvaccinated Americans and foreigners. This can potentially spread to the unvaccinated population including those who are opposed to the vaccine because of personal, philosophical and religious beliefs, those who believed they received the vaccine but did not and those who cannot get the vaccine because they are still very young or have certain medical conditions.

Facts about Measles

Measles is a highly contagious childhood infection caused by a virus. It is usually transmitted through airborne droplets from cough or sneeze or contact with discharge from the nose or throat of an infected person. It is considered a serious disease especially in children and those with weakened immune system.

Continue on Next Page

OFFICE LOCATIONS

New Castle County Office

Two Fox Point Centre
6 Denny Road, Suite 101
Wilmington, DE 19809
Phone: 302-765-0191
FAX: 302-765-0195
VP: 302-504-4754

Kent County Office

154 South Governors Ave.
Dover, DE 19904
Phone: 302-735-4599
FAX: 302-735-5623
VP: 302-450-1699

Sussex County Office

10 N. Church St
Milford, DE 19963
Phone: 302-536-1387
FAX: 302-536-1407
VP: 302-504-4754

Health Corner: Measles Outbreak (Continued)

By Dr. Jackie Reyes

Symptoms

Fever, dry cough, runny nose, red blotchy rash appearing 14 days after exposure to a positive case and red watery icy eyes are the five main symptoms of measles. Other symptoms may include sore throat, decrease in appetite, diarrhea, muscle pain and a white spot inside the cheek known as a Koplik's Spot.



Child in picture above has red blotchy skin symptom of measles

Treatment

Measles has no known cure, and treatment is based on the present symptoms. Over the counter medications such as acetaminophen or ibuprofen are given for pain and fever. Patients are also advised to rest and take plenty fluids.

Prevention

Vaccination is the best protection against the disease.

The first dose of the vaccine is given when the child is between 12 to 15 months. The second dose is given between the age of 4 and 6 years. One dosage of the vaccine is said to be 93% effective against the measles and the two doses are 97% effective.

According to the CDC, the vaccine is not 100% effective and 3 out of 100 vaccinated people exposed to the virus can still get sick but the disease is usually less severe than in unvaccinated people.

Once can try to locate his vaccination record if he is unaware of his vaccination status. There is no harm in getting another dose of the vaccine, if unsure another option is to ask the physician to test the blood(titer) to determine immunity.

Any health issues and concerns about vaccinations should always be discussed with the patients healthcare practitioner.

Please Note: If the links below do not work please cut and paste them into your browser.

Source: <https://www.cdc.gov/measles/signs-symptoms/photos.html>

Reference:

<https://www.cdc.gov/measels/data-research/index.html>

<https://www.hopkinsmedicine.org/health/conditions-and-diseases/measles-what-you-should-know>

<https://www.cdc.gov/measles/about/questions.html>

<https://www.cdc.gov/measles/index.html>

Independent Resources Inc. Quarterly Mixer!

Within the article are pictures from the Independent Resources Inc. Quarterly Mixer from The Freedom Center in Middletown Delaware.

Independent Resources Inc. In a joint effort with **The Freedom Center**, hosted it's second quarterly mixture, a spring fling, at **The Freedom Center's** Middletown location on **Thursday, March, 12th**. We highlighted a premier partner at each mixer and we highlighted **Pace Your Life**. **Pace Your Life** didn't disappoint.

The Freedom Center (FC) was decorated with lots of Spring-time flair and candy. The staff did all the heavy lifting to include decorating, moving furniture, preparing tasty heavy hors d'oeuvres (kudos to their volunteer Chris Kruemmer), and mocktails (served by Janice James-Webb).

Visitors mingled and listened to presentations from Lillian Harrison (IRI Executive Director), Jody Hougentogler (FC Executive Director) and Erin Steele (Pace Your Life Marketing Director). Several guests completed bingo cards, designed to help them get to know each other, and they won door prizes. Pace Your Life staff volunteered to host a future IRI mixer at their Milford site and several agencies volunteered to participate in IRI's upcoming podcasts entitled "This Ability"!

CILs provide services, support and advocacy for people with disabilities. Federal funding primarily supports CILs, which share five mandated core services The core services are: advocacy, transition, independent living training skills, peer support, and information and referrals.

Although our core services are identical, IRI and The Freedom Center, both jointly and separately, focus on other programs and services like housing, home modifications, healthcare navigation, entrepreneurship, and services for the visually and hearing impaired. In an effort to serve our consumers in the best holistic manner possible, we collaborate with each other and with other community providers. Our mixers specifically serve that purpose of collaboration.

Continue on Next Page



Independent Resources Inc. Quarterly Mixer! (Continued)

Meet some of the friends, partners and resources who were able to come out and collaborate with us last month:

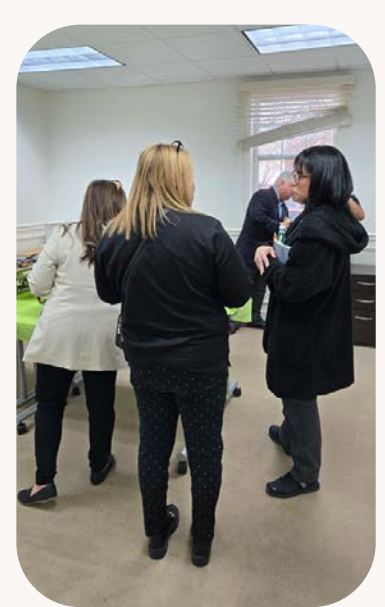
The ARC of Delaware
SpinLife
Community Systems, Inc.
Community Legal Aid Society, Inc.
Easter Seals
Chesapeake Regional Pharmacy
Pace Your Life
Hlade
Delaware Health Association
First State Community Action
El Shaddai Christian Ministries
Tender Stages Therapeutic Services
Wilmington Senior Center



As a community care hub, IRI intends to be that one-stop single point of contact for clients, outpatients, healthcare systems and community-based organizations. We will have trusted partners as resources as we continue to support the social determinants that affect total health.

When social needs are met, health needs are positively affected, and it all makes for a healthier community.

So, reach out, join us, and share this information so that we can build that healthy community together!



Community Central

Spring is here! Time to ditch the winter coats and get ready for the warm weather ahead. Check out these awesome articles below while enjoying warmer weather.

Please Note: If the links below are not working please cut and paste them into your browser.

Tips for Helping Homeless Youth Succeed in College

School House Connection talks about ways to help homeless youth succeed in College.

[Click Here to Read More](#)

<https://tinyurl.com/2rrn7at2>

Spring Cleaning Tips to Keep Your Home Tidy

Kathleen Callen discusses some helpful tips for the blind and visual impaired with their spring cleaning.

[Click Here to Read More](#)

<https://tinyurl.com/vf2a5vbn>

Meet Amy Simonson The first-ever Ms. Wheelchair Delaware USA

Shannon Marvel McNaught from the Delaware News Journal talks to the first ever Delaware represented for Ms. Wheelchair USA pageant.

[Click Here to Read More](#)

<https://tinyurl.com/mpabuut6>

Delaware Approved to Begin Fiber Broadband Connections to 5,700 Homes and Businesses

Former Governor Bethany Hall Long along with Delaware's tech and information department announced two internet providers will expand service across the state this spring.

[Click Here to Read More](#)

<https://tinyurl.com/yaytckhk>

8 Spring Activities for Adults with Disabilities

As the weather warms up outside Paige Flamm from giv.care has some activities adults with disabilities can enjoy with family, friend's and during caregiver shifts.

[Click Here to Read More](#)

<https://tinyurl.com/2pkapxrs>

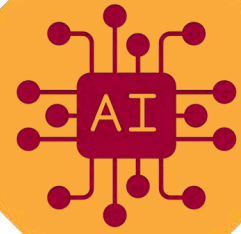
Passed Over for Promotions, No Jobs in sight: Some Deaf Californians question what's fair?

Adam Echelman from calmatters.org discusses the challenges Deaf people face in finding jobs and earning promotions.

[Click Here to Read More](#)

<https://tinyurl.com/ytyftydk>

Mastering AI for Business Growth: Hands-On Training



To receive invites to workshops:



tinyurl.com/IRISignUp

Unlock Your Business Potential with AI

Are you a solopreneur overwhelmed by the daily grind? Our workshops will teach you how to leverage AI to:

- **Boost creativity:** Generate fresh ideas and content with AI assistance.
- **Enhance marketing efforts:** Create engaging social media posts, email campaigns, and more.
- **Master essential business tools:** Learn how to use AI for everything from writing business plans to designing graphics.

Join Us for the Next Workshop in the Series

- Feb 13 AI Powered Business Blueprint: Crafting Your Business Plan
- Feb 20 Pitch Perfect with AI: Designing Your Persuasive Pitch Deck
- Feb 27 Open Lab
- Mar 6 Virtual Office Hours
- Mar 13 Brand Alchemy with AI: Creating a Strong Brand Identity
- Mar 20 Content Creation Magic: Blogging and Social Posts
- Mar 27 Open Lab
- Apr 3 Virtual Office Hours
- Apr 10 Email Excellence with AI: Building Email Campaigns
- Apr 17 AI-Powered Newsletter Magic
- Apr 24 Open Lab
- May 1 Virtual Office Hours
- May 8 AI-Powered Lead Generation: Attract and Convert
- May 15 Design Smarter, Not Harder: AI-Driven Design
- May 22 Open Lab
- May 29 Virtual Office Hours
- Jun 5 AI-Assisted Digital Strategy: Maximize Your Online Impact
- Jun 12 AI-Powered Productivity: A Toolkit For Freelancers and Solopreneurs
- Jun 19 Open Lab
- Jun 26 Virtual Office Hours

Thursdays @ 3:00 - 4:30 PM

**Dover Public Library
35 Loockerman Plaza
Dover, DE 19901**

Caregiver Resource Center Network

Are you caring for a loved one?

Seeking Support & Assistance Can Make Your Role as a Caregiver Easier!

Walk-ins Welcome !

Caregiver Resource Centers Network:

CHEER Community Center: 302-854-9500

Georgetown Easterseals: 302-253-1129

Modern Maturity: 302-734-1200 ext. 186

New Castle Easterseals: 302-221-2076

Newark Senior Center: 302-737-2336 ext. 112

Wilmington Senior Center: 302-651-3420

302-651-3424


Find out more by calling the Aging and Disability Resource Center
(ADRC) 1-800-223-9074

**Are You Caring
For A Loved One?**
Seeking Support & Assistance Can Make Your
Role as a Caregiver Easier!

**CAREGIVER RESOURCE
CENTERS NETWORK**

CHEER Community Center 302-854-9500	Walk-Ins Welcome
Georgetown Easterseals 302-253-1129	New Castle Easterseals 302-221-2076
Modern Maturity 302-734-1200 ext. 186	Newark Senior Center 302-737-2336 ext. 112
	Wilmington Senior Center 302-651-3420 302-651-3424

Find out More by
Calling the Aging and
Disability Resource
Center (ADRC)
1-800-223-9074


Delaware
Aging & Disability
Resource Center

DELAWARE HEALTH AND SOCIAL SERVICES
Division of Services for Aging and Adults with Physical Disabilities

Caregiver Resource Centers are supported by both state and federal funds per the Older Americans Act,
Title III Part E and the National Caregiver Support Program.

Upcoming Events

HERE ARE SOME EVENTS, WORKSHOPS AND MORE THAT WILL BE COMING UP THIS YEAR.



Please Note: If the links below are not working please cut and paste them into your browser.

Wilmington Police April Community Resource Fair

Date: Thursday, April 17

Time: 4:00PM - 6:00PM

Location:

Ezion-Mount Carmel
United Methodist Church
800 North Walnut St.
Wilmington, DE 19801

Price: Free

[Click Here to Learn More](#)

<https://tinyurl.com/yz6ec884>

YMCA of Delaware Health Kids Day

Date: Saturday, April 26th

Time: 11:00AM - 2:00PM

Location:

Multiple YMCA locations
across the state of
Delaware.

Price: Free

[Click Here to Know the
YMCA Locations that will
be Having The Event](#)

<https://tinyurl.com/2eb22wav>

Spring Senior Health Fair

Date: Wednesday, April 30th

Time: 10:00AM - 2:00PM

Location:

Delaware Food Bank
Milford Branch
102 Delaware Veterans Blvd.
Milford, DE 19963

Price: Free, attendees are
asked to pre register

[Click Here to Learn More &
Register](#)

<https://tinyurl.com/3sx8n24s>

5th Annual Autism Event

Date: Saturday May, 3

Time: 12:00PM - 5:00PM

Location:

Tony's Pizza & Pasta
613 S. Main St.
Bridgeville, DE 19933

Price: \$ 7.00

[Click Here to Learn More](#)

<https://tinyurl.com/ys9e3pcj>

Mobile Food Pantry & Resource Fair

Date: Thursday, May 22

Time: 11:00AM - 2:00PM

Location:

Kingswood Community Center
2300 Bowers Street
Wilmington, DE 19802

Price: Free

[Click Here To Learn More](#)

<https://tinyurl.com/yrruk6wd>

Historic New Castle's Separation Day Celebration

Dates: Friday, June 6
Saturday, June 7

Times:

Friday: 6:00PM to 9:00PM
Saturday: 1:00PM - 9:30PM

Location:

Historic New Castle
50 Market St.
New Castle, DE 19720

Price: Free with food and
drink available to purchase

[Click Here to Learn More](#)

<https://tinyurl.com/yfckz8nw>

Accessible Attractions

Spring is here, that means warmer weather and more fun in the sun. Do you want to go out and enjoy the sights but are unsure where to go? Or are you concerned about accessibility for yourself, a relative or friend?

Visitdelaware.com, has a list of various attractions ranging from the Brandywine Zoo to the Delaware Art Museum and more. They even have some outdoor activities, too.

Each place on the lists give a brief description of what they are about and also more importantly, information about their accessibility.

Please Note: If the links below are not working please cut and paste them into your browser.

Accessible Attractions

<https://tinyurl.com/5n7zreef>

Outdoor Activity Accessibility

<https://tinyurl.com/2xjsbttb>

For more information on attractions and other activities please visit:

<https://www.visitdelaware.com/>

<https://tinyurl.com/4e3v7wsy>

UDiscover Summer Program

The Career and Life Studies Certificate (CLSC) is offering a summer transition program for Delaware students with disabilities.

UDiscover
July 7- July 18

During this 2-week summer program students will...
Engage in job shadows or interviews with professionals in their fields of interest

Explore a variety of post-high school education options

Learn essential self-advocacy, problem-solving, and other life skills

Create post-high school goals and action plans and deliver them at the closing ceremony

Live on campus at the University of Delaware

There may be a fee for students to live on campus, although the Center for Disabilities Studies makes every effort to make the program free for Delawareans.

Students from all three counties in Delaware can participate.

Interested candidates must:

- Be between the ages of 16 and 22
- Currently be enrolled in school
- Submit this application
- Attach documentation of disability (Question 21)
- Participate in an interview

Applications are due by April 21.

Please Note: If the link below are not working please cut and paste them into your browser.

To apply, please go here: [UDiscover 2025 Application](#)

<https://tinyurl.com/4jm7vp6f>

If you have questions about UDiscover or have trouble with an application, contact them at 302-831-4690 or CDS-PreCollege@udel.edu.



Thank you for hanging in there until the end. We hope you enjoy the content. Well, it's time to go but stay tune for our summer edition.

For More Info:

WWW.IRI-DELAWARE.ORG

Please follow us on:



[Facebook](#)